

ASX COD

# The Copper Growth Story on ASX

Investor Presentation – RIU Explorers' Conference Fremantle WA  
1230 AWST 15 February 2023

**CCDA**  
MINERALS



## Important Notices

**Nature of this document:** The purpose of this presentation is to provide general information about Coda Minerals Limited (ACN 625 763 957) (the 'Company'). Unless otherwise stated herein, the information in this presentation is based on the Company's own information and estimates as at the date of this presentation. In attending this presentation or viewing this document you agree to be bound by the following terms and conditions.

**Not an offer or advertisement:** This presentation is for information purposes and does not constitute or form any part of any offer or invitation to sell or issue, or any solicitation of any offer to purchase or subscribe for, any securities in the Company in any jurisdiction. This presentation and its contents must not be distributed, transmitted or viewed by a person in any jurisdiction where the distribution, transmission or viewing of this document would be unlawful under the securities or other laws of that or any jurisdiction. In particular, this presentation may not be distributed or released, directly or indirectly, in the United States. This presentation does not constitute an advertisement for an offer or proposed offer of shares. Neither this presentation nor anything contained in it forms the basis of any contract or commitment and it is not intended to induce or solicit any person to enter into, or refrain from entering into, any contract or commitment.

**Not financial product advice:** This presentation does not take into account the individual investment objectives, financial situation and particular needs of each of the Company's shareholders or potential investors. You may wish to seek independent financial and taxation advice before making any decisions in respect to this presentation. Neither the Company nor any of its related bodies corporate is licensed to provide financial advice in respect of the Company's securities or any other financial products.

**Forward-looking statements:** Certain statements in the presentation are or may be perceived as "forward looking statements" and represent the Company's intentions, projections, expectations or beliefs concerning, among other things, future operating and exploration results or the Company's future performance. You are cautioned not to place undue reliance on any forward looking statement. These forward looking statements are based on current expectations at the date of this publication. The projections, estimates and beliefs contained in such forward looking statements necessarily involve known and unknown risks and uncertainties, and are necessarily based on assumptions, which may cause the Company's actual performance and results in future periods to differ materially from any express or implied estimates or projections.

**Disclaimer:** No representation or warrant, express or implied, is made by the Company that the material contained in this presentation will be achieved or prove to be correct. Except for statutory liability which cannot be excluded, each of the Company, its directors, officers, employees, advisers, agents and contractors expressly disclaims any responsibility for the accuracy, fairness, sufficiency or completeness of the material contained in this presentation, or any opinions or beliefs contained in this presentation, and excludes all liability whatsoever (including negligence) for any loss or damage which may be suffered by any persons as a consequence of any information in this presentation or any error or omission there from. The Company is under no obligation to update or keep current the information contained in this presentation or to correct any inaccuracy or omission which may become apparent, or to furnish any person with any further information. Any opinions expressed in the presentation are subject to change without notice.

**Unverified information:** This presentation may contain information (including information derived from publicly available sources) that has not been independently verified by the Company.

Photographs used on page 19 were provided by Adam Mørk Architectural Photography via <http://adammark.dk/>.

# RARE INVESTMENT OPPORTUNITY

ASX COD



## STRATEGIC FOCUS

- Discovering and proving up copper resources, an essential metal for a low carbon future
- Major source of ethical, Australian copper and cobalt
- On the hunt for Australia's next major IOCG deposit



## TIER 1 LOCATIONS

- Elizabeth Creek; Olympic IOCG Copper Province, SA
  - 100% ownership of Elizabeth Creek
- Cameron River; Mount Isa Inlier, QLD
- Balmoral; Murray Basin Mineral Sands Province



## EXISTING JORC RESOURCES

- 1.1Mt of Contained CuEq Defined
  - 43Mt @ 1.84% CuEq (Emmie Bluff)
  - 18Mt @ 1.14% CuEq (Windabout)
  - 1.8Mt @ 1.67% CuEq (MG14)
- Mining Study complete, Scoping Study well advanced



## Three Distinct Value Drivers

- Emmie Bluff – advanced study stage Cu-Co
- Emmie IOCG – major scale potential Cu-Au
- Exploration Opportunities – VIC, NSW & QLD

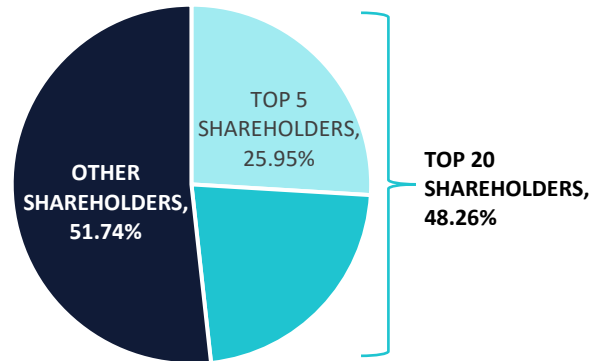


# CORPORATE STRUCTURE

ASX COD

## TOP 5 SHAREHOLDERS (as of 31 January 2023)

Rank	Shareholder	%IC
1	ANGANG GROUP HONG KONG (HOLDINGS) LTD	8.47%
2	MR KEITH FRANCIS JONES & MRS JENNIFER JONES	5.06%
3	LUJETA PTY LTD	4.74%
4	HSBC CUSTODY NOMINEES (AUSTRALIA) LIMITED	4.37%
5	CITICORP NOMINEES PTY LTD	3.31%



**COD**  
ASX Code

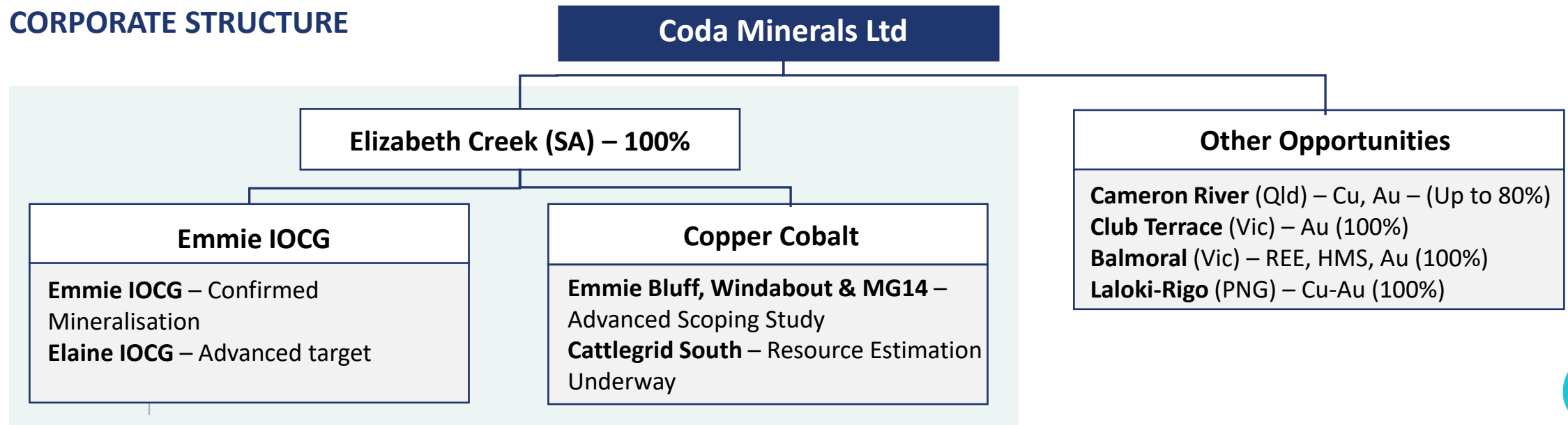
**\$0.255**  
Share Price  
13 February 2023

**140,456,085**  
Ordinary Shares

**\$36M**  
Market Capitalisation

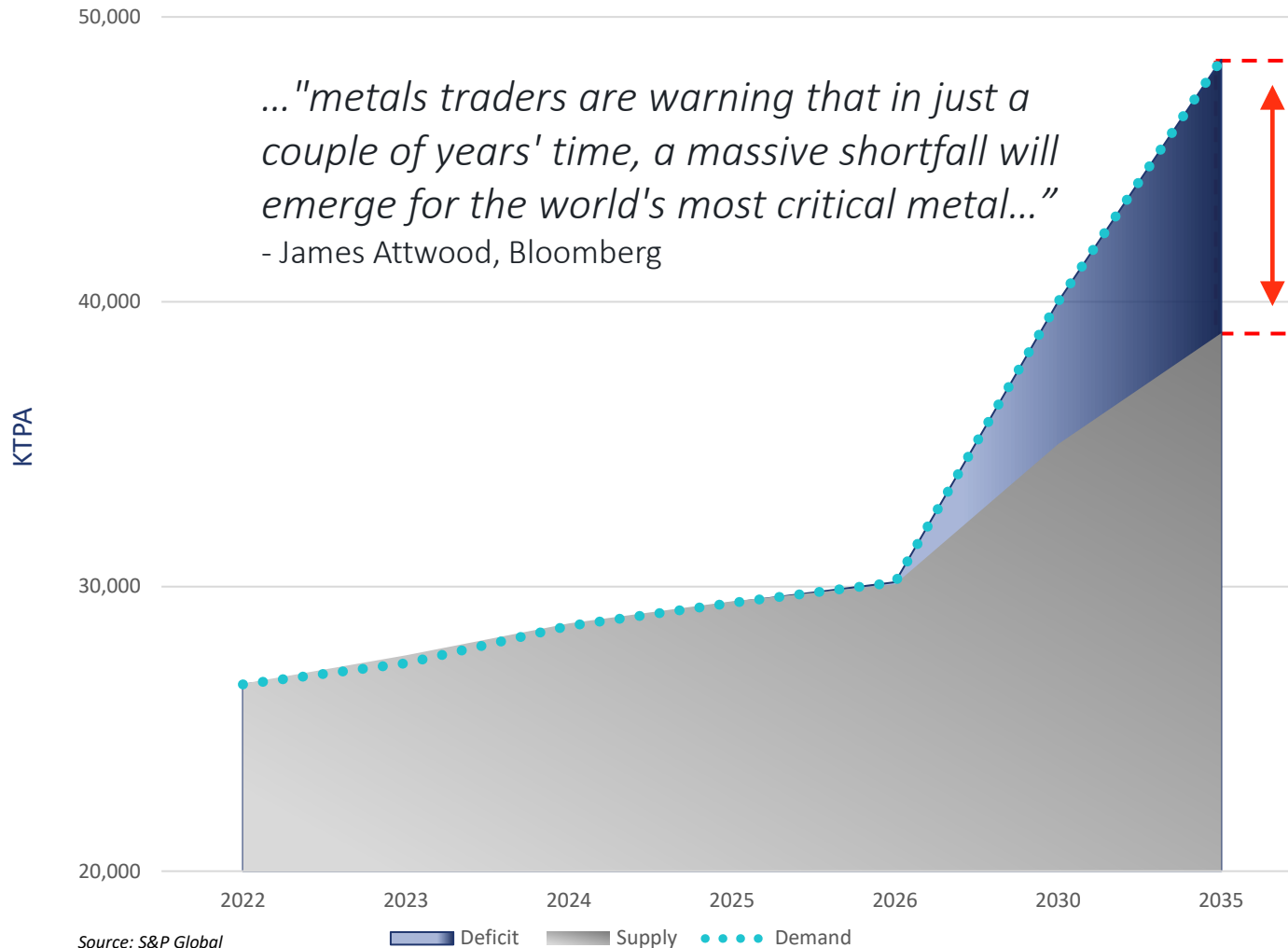
**\$7.2M**  
Cash and Equivalents  
31 December 2022

## CORPORATE STRUCTURE



# COPPER SUPPLY CHASM

## Copper Supply and Demand Forecast



**Forecast supply deficit up to 9.9 Mt in 2035**

### Supply Constraints

- Existing mines are reaching their exhaustion point
- Low pipeline of upcoming high quality projects due to dwindling copper grades and rising input costs
- Downturn of copper prices disincentivise present exploration, exacerbating future supply issues

### Demand Drivers


- Net-zero emission goals are driving the push for decarbonisation through renewable energy generation (wind & solar farms, battery storage) and electrification
- Electric vehicles expected to account for 1/5 of copper demand in 2035

Source: S&P Global

■ Deficit ■ Supply ●●● Demand





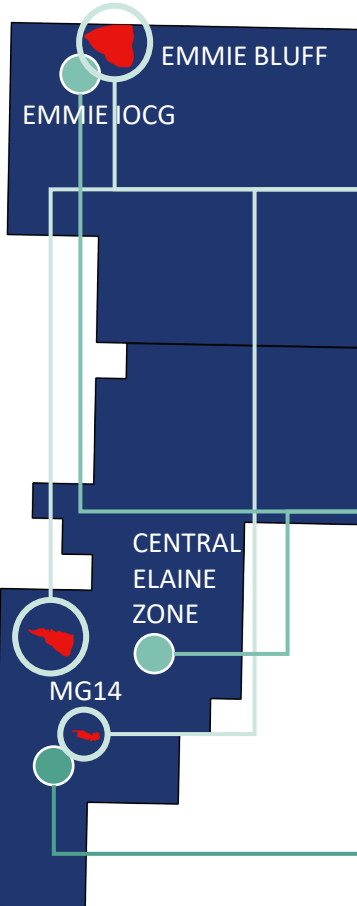


## Elizabeth Creek – South Australia

Sedimentary Copper-Cobalt and IOCG Copper-Gold  
in a large, synergistic copper rich system.

# OVERVIEW – ELIZABETH CREEK

## ELIZABETH CREEK



### Sedimentary: Cu-Co

- 1.1Mt of JORC 2012 Contained CuEq
- Scoping study targeting H1 2023
- Ongoing exploration

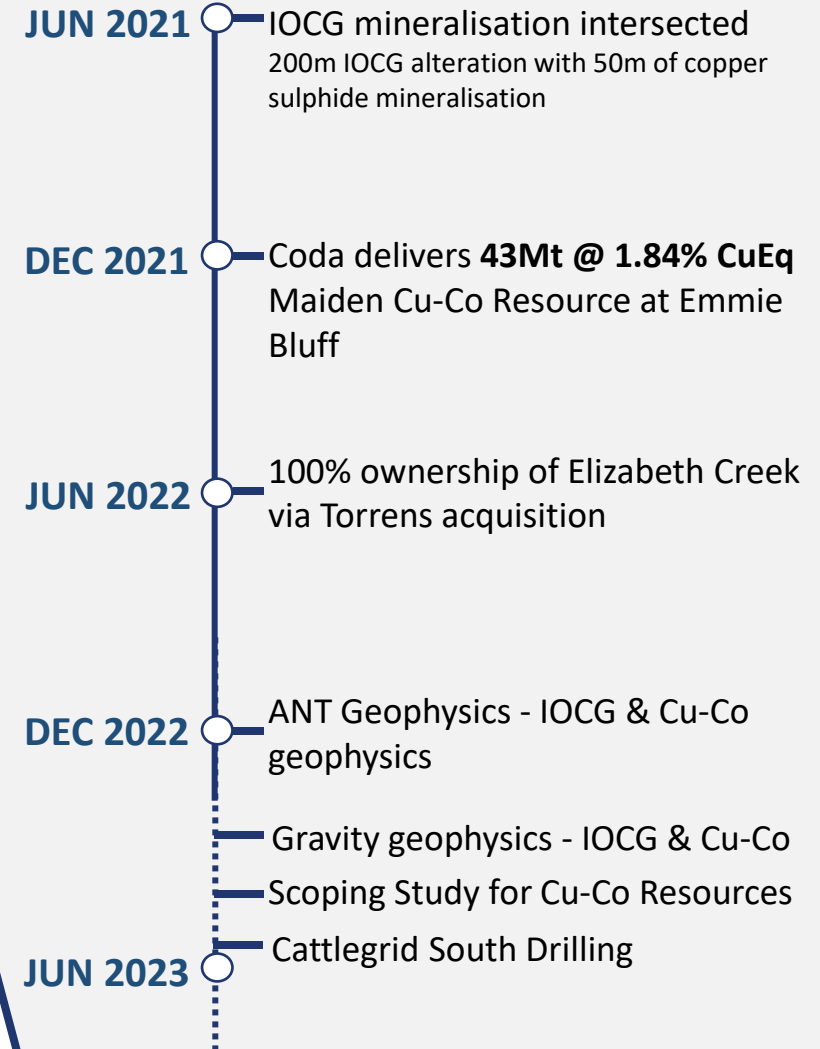
### IOCG: Cu-Au

- Major IOCG mineralised system identified
- Extensive geophysics campaign planned
- High risk, high reward exploration

### Cattlegrid South: Cu

- Copper breccia prospect
- Extensive historical drilling
- Resource definition drilling planned

Total Area: 701 km<sup>2</sup>



# ADVANCED INDICATED RESOURCES

**1,100,000t** of Contained Copper Equivalent

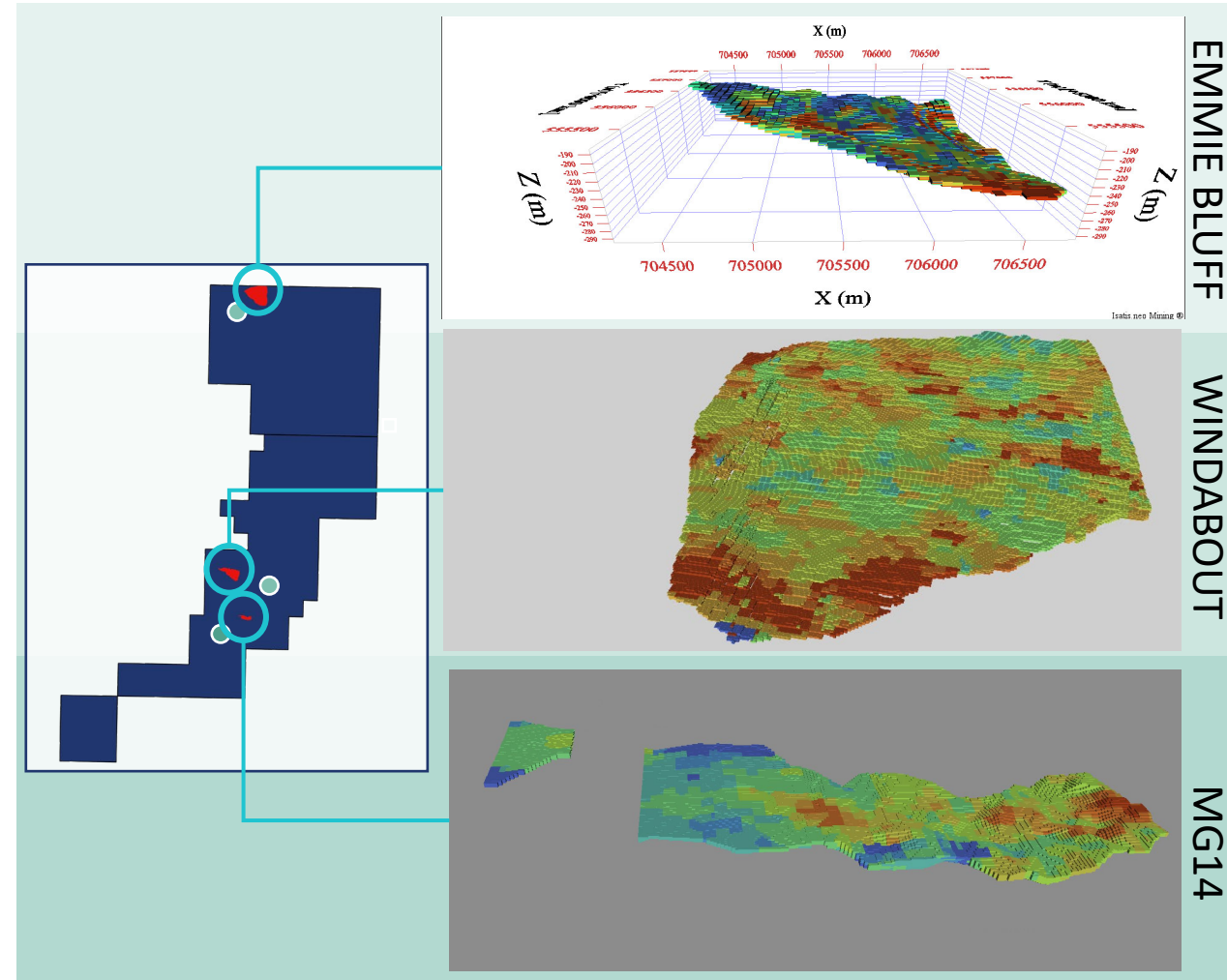
Across 3 JORC2012 deposits, 1 underground, 2 open pit.

- ✓ Mining Studies **Complete**
- ✓ Initial Flowsheet design **Complete**

**Scoping Study** advancing on time and budget

## JORC 2012 Mineral Resources

EXISTING JORC 2012 MINERAL RESOURCES							
	Category	Mt	Cu%	Co%	CuEq% <sup>6</sup>	Contained Cu (t)	Contained CuEq (t)
Windabout <sup>1,2</sup>	Indicated	17.67	0.77	0.05	1.41 <sup>4</sup>	136,000	249,000
MG14 <sup>1,2</sup>	Indicated	1.83	1.24	0.03	1.67 <sup>4</sup>	23,000	31,000
Emmie Bluff <sup>1,3</sup>		43.3	1.30	0.047	1.84 <sup>5</sup>	562,000	797,000
<b>Total</b>						<b>721,000</b>	<b>1,100,000<sup>1</sup></b>



<sup>1</sup> Numbers have been rounded

<sup>2</sup> (JORC 2012 Indicated) 0.5% CuEq. cut-off. See Gindalbie Metals ASX announcement on 19 January 2018 for Competent Person's statement and full details

<sup>3</sup> JORC 2012 Indicated) 1.0% CuEq. cut-off. See Coda Minerals ASX announcement on 20 December 2021 for Competent Person's statement and full details

<sup>4</sup> Copper equivalent calculated using the following formula  $CuEq\% = Cu\% + 0.0012 \times Co\ ppm$

<sup>5</sup> Copper equivalent calculated using the following formula  $CuEq\% = Cu\% + 0.00068 \times Co\ ppm + 0.337 \times Zn\ \% + 90.3 \times (Ag\ ppm)/10000$

<sup>6</sup> Although CuEq calculation differs between the resources, the company believe it is reasonable to compare and combine the contained tonnes



# EMMIE BLUFF INTEGRATED SCOPING STUDY

Material progress has been made on the Scoping Study with many inputs now complete or close to completion



## Emmie Bluff

Positive underground mining study completed with a strong “go-forward” initial mine plan and no technical barriers identified.

17 Years

Mine Life

2.5 Mtpa

Steady-State Production Rate

26 Mt @ 1.86% CuEq

Total Mined Ore

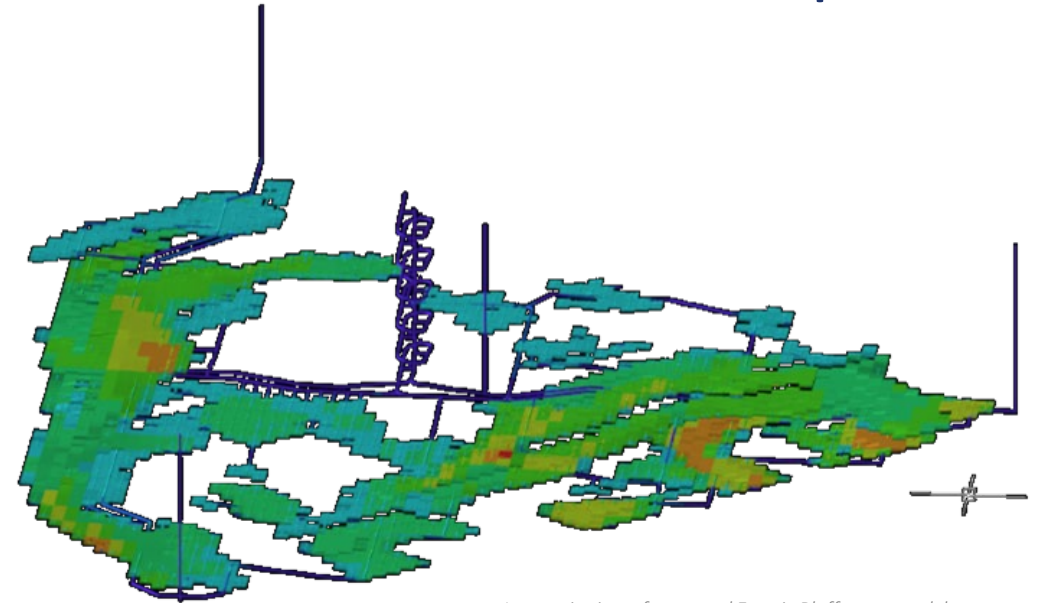
Flat long-hole Open Stoping with Pillars

Mining Method

### Exceptional Mineralogical Characteristics

- Advanced processing flowsheet now complete
- Cobalt is in carrollite form, highly amenable to flotation
- Demonstrated ability to go to final products
- 74% Cu recovery & 90% Co recovery to concentrate by flotation
- 99% recovery to copper cathode & cobalt sulphate by Albion Process

## Emmie Bluff Slope Model



*Isometric view of proposed Emmie Bluff slope model.*



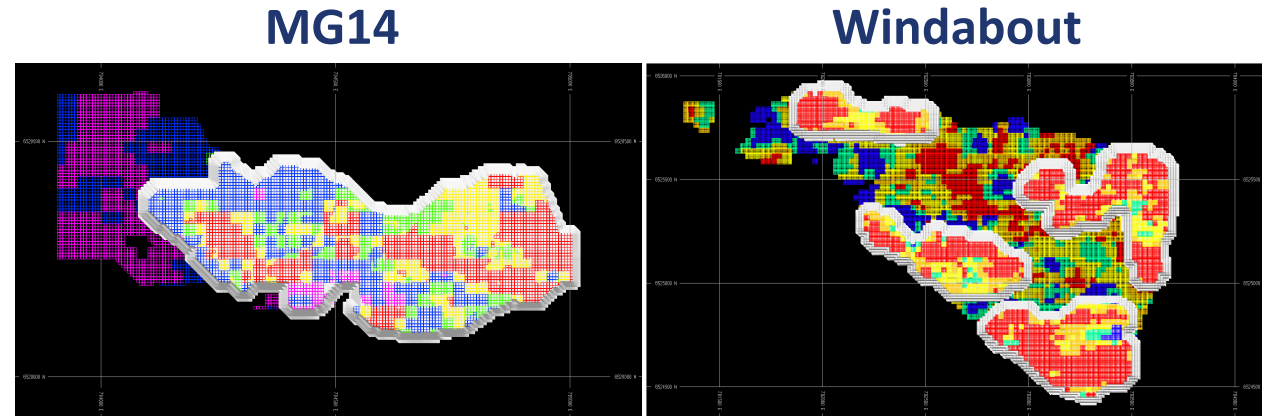
# MINING STUDIES COMPLETED

## MG14/Windabout

Open pit extraction of these deposits will allow the operation to rapidly achieve nameplate metal production during ramp-up of the EB UG mine.

1.3Mt @ 1.78% CuEq  
MG14 Total Mined Ore

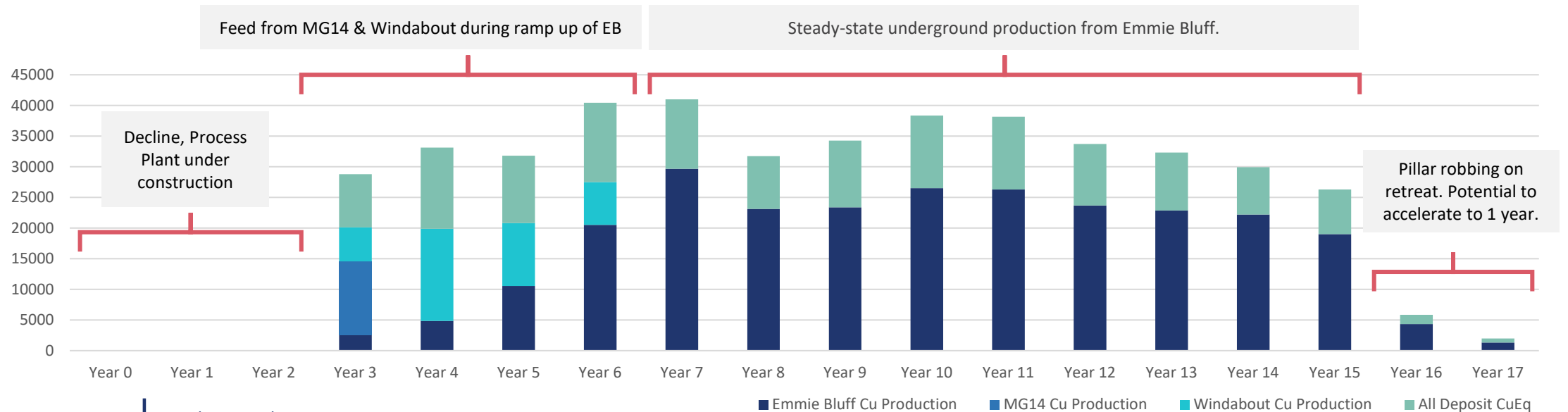
6Mt @ 1.71% CuEq  
Windabout Total Mined Ore



MG14 Optimised Pit Base Case: 500m grid.

Windabout Optimised Pit Base Case: 500m grid.

## Elizabeth Creek Metal Production Schedule



The anticipated metal production schedule for all three deposits based on mining and metallurgy studies completed to date.





ROM

JAW CRUSHER

MILLING

FLOTATION

FRONT-END PROCESSING

Completed

ASX COD

METALLURGY

Concentrate

First Product Sale

Final Product Sale

DOWNSTREAM PROCESSING OPTIONS

OPTION 1

Completed

OPTION 2

Materially Complete

OPTION 3

Testwork Materially Advanced

RAPID STARTUP

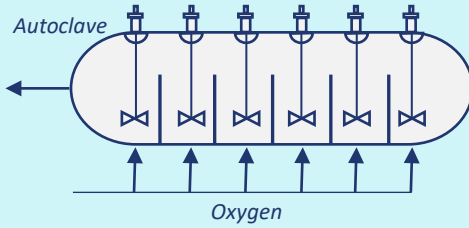
Bulk Concentrate Sale - Cu, Co, Ag Yr 1 prior to completion of downstream processing plant (Preferred Option)

Completed

PRODUCTS

- Copper Cathode
- Cobalt Sulphate
- Silver Dore
- Zinc Carbonate

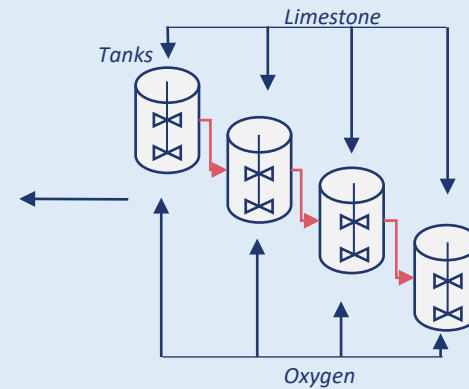
Hydrometallurgical Processing  
Cu: SX/EW, Co: Crystallisation  
Zn: Precipitation  
Ag: Merrill Crowe



**POX**  
(Pressure Oxidation)  
High pressure leaching process.

- Copper Cathode
- Cobalt Sulphate
- Silver Dore
- Zinc Carbonate

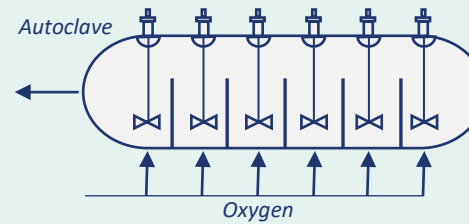
Hydrometallurgical Processing  
Cu: SX/EW, Co: Crystallisation  
Zn: Precipitation  
Ag: Merrill Crowe



**ALBION**  
Atmospheric leaching process.

- Upgraded Copper-Silver Concentrate
- Cobalt Sulphate
- Zinc Carbonate

Hydrometallurgical Processing  
Cu/Ag: Concentrate Metathesis  
Co: Crystallisation  
Zn: Precipitation

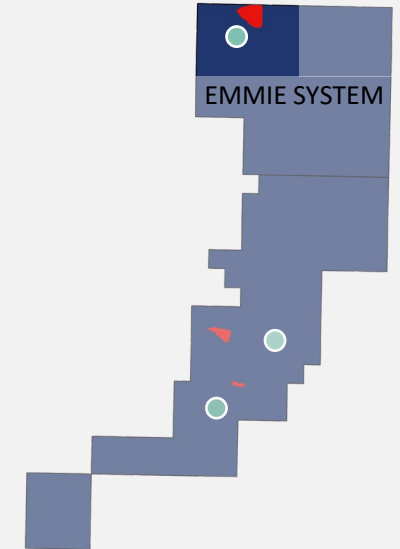
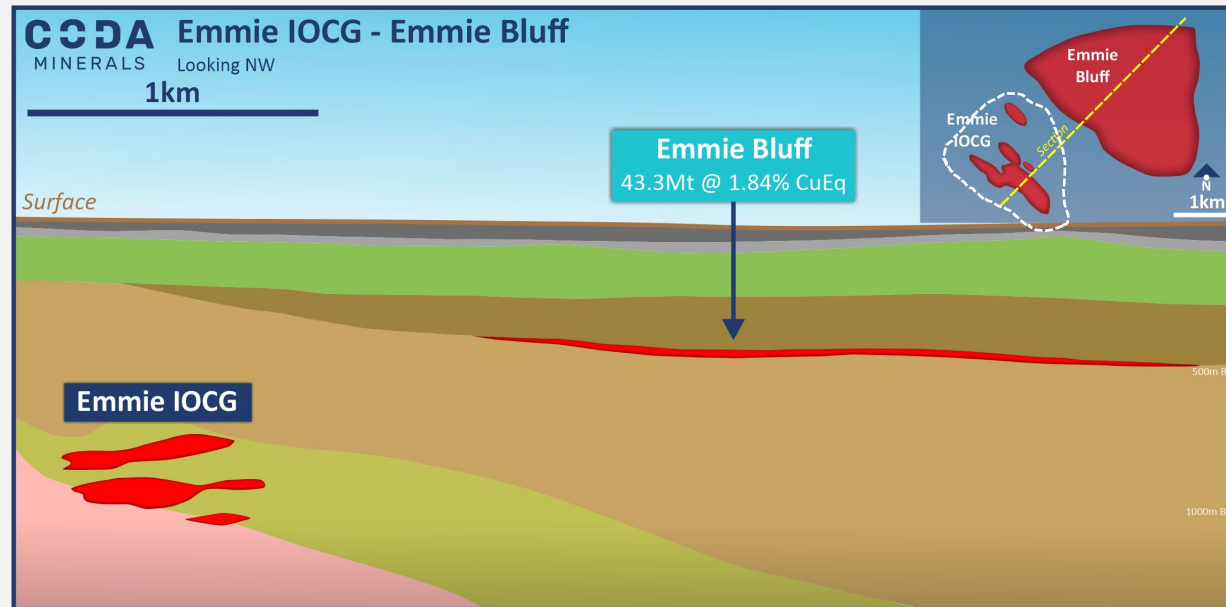
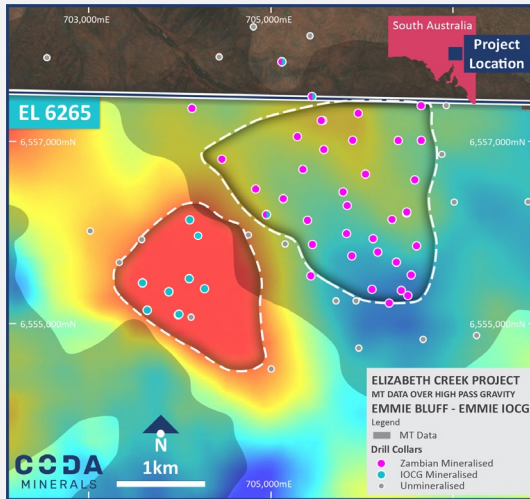


**NONOX**  
2 step process: oxidative leach process at moderate temperature and pressure, followed by non-oxidative leach in sulphate rich fluid to promote metathesis (selective leaching).

Highly Simplified Flowsheet For Illustrative Purposes Only



# THE EMMIE SYSTEM



## EMMIE IOCG

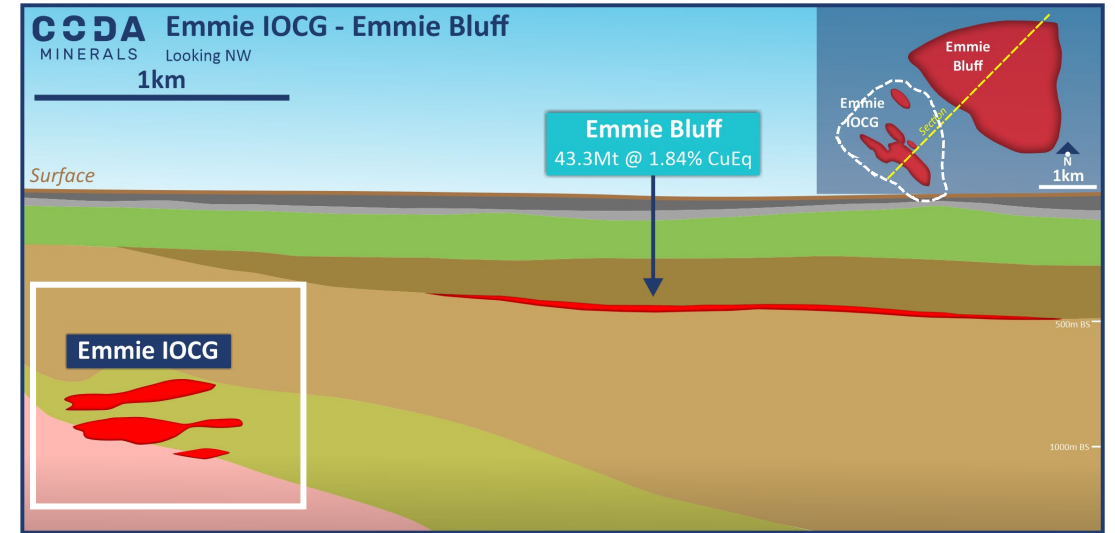
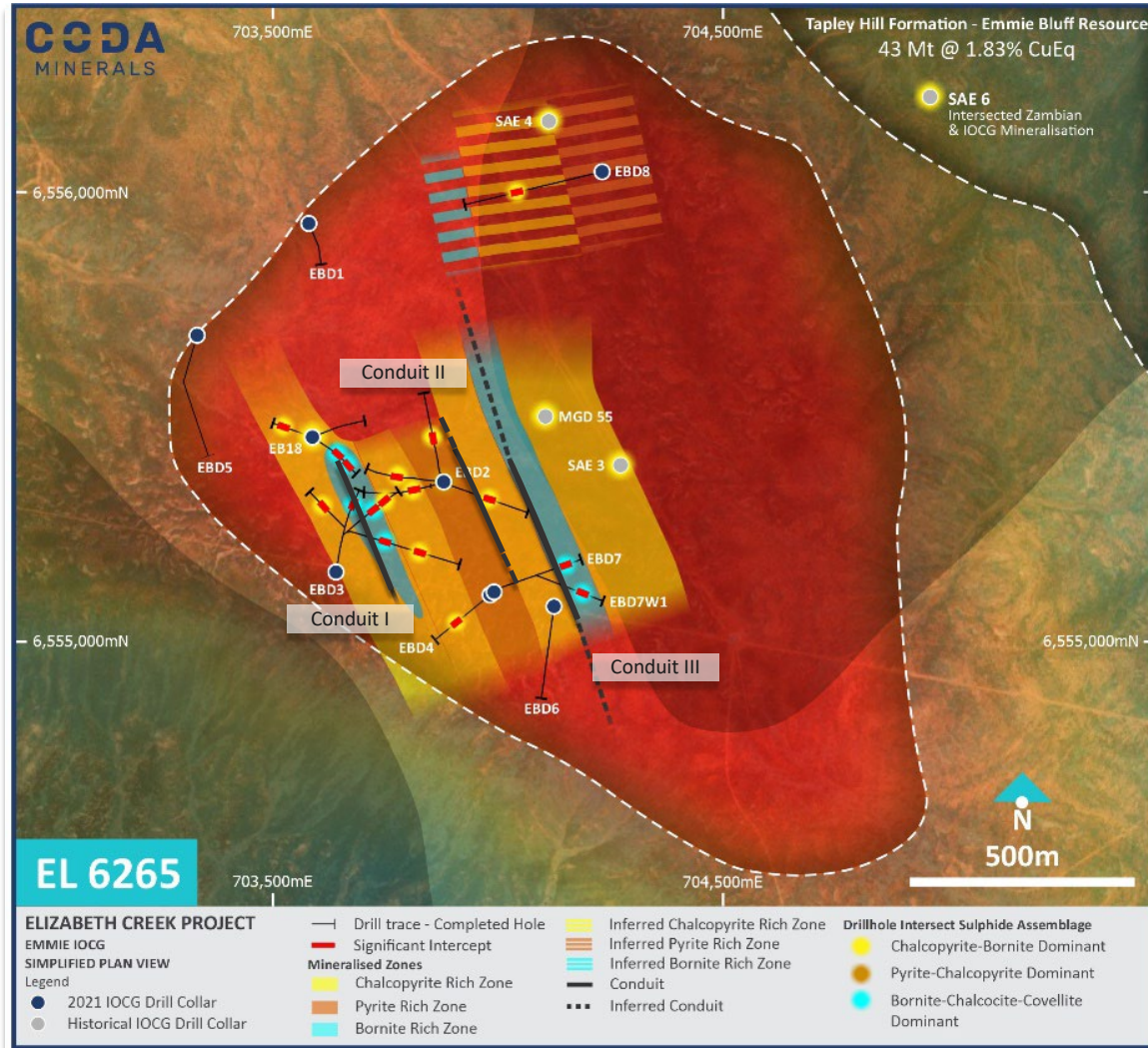
Large-scale, early stage copper-gold deposit approximately 400m below Emmie Bluff.

## EMMIE BLUFF

JORC 2012 Resource 43Mt@1.84% CuEq  
Sediment hosted Copper-Cobalt, approximately 400m deep.



# EXPLORATION MODEL AT EMMIE IOCG



EBD3W2	<b>BORNITE DOMINATED</b>	69m	803m	27m @	2.0% Cu, 0.29 g/t Au				
	CHALCOPYRITE DOMINATED					912m	42m @	1.2% Cu, 0.28 g/t Au	
EBD3W2A	<b>BORNITE DOMINATED</b>	37m	814m	10m @	2.9% Cu, 0.39 g/t Au				
	CHALCOPYRITE DOMINATED					5m	832m	5m @	0.8% Cu, 0.32 g/t Au
							37m	907m	37m @
EB18W2	<b>BORNITE DOMINATED</b>	13m	815m	24m @	2.2% Cu, 0.29 g/t Au				
						13m	902m	13m @	3.5% Cu, 0.64 g/t Au
EBD2W4	CHALCOPYRITE DOMINATED	43m	922m	35m @	1.0% Cu, 0.29 g/t Au				
						898m	8m @	0.6% Cu, 0.04 g/t Au	
EBD7	<b>BORNITE DOMINATED</b>	16m	812m	16m @	2.7% Cu, 37.5 g/t Ag				

BEST DRILL RESULTS

<sup>1</sup> Figures been rounded to the closest meter for simplicity

<sup>2</sup> Copper grades have been rounded to tenth degree for simplicity

Please see ASX releases on [28 July 2021](#), [23 August 2021](#), [6 & 22 December 2021](#), [28 February 2022](#) and [20 June 2022](#) for full details of all mineralised holes and Table 1



# NEAR-TERM GEOPHYSICAL EXPLORATION

Preliminary ANT models show exceptional applicability to both IOCG and shale hosted exploration at Emmie System

## Ambient Noise Tomography (ANT)

ANT is a technique that uses pervasive seismic noise to visualise a three-dimensional subsurface shear wave velocity model.

## New Area's of Interest Identified

- **IOCG:** Preliminary data has highlighted new areas of interest to the northwest and southeast of Emmie IOCG
- **Copper-Cobalt:** ANT anomalism identified coincident with Emmie Bluff mineral resource; other anomalies identified at the same stratigraphic level

## Next Steps

- Detailed interpretation underway, results expected end Q1
- Follow-up gravity survey commencing soon
- Final deliverable will be a detailed new geologically-constrained 3D gravity model to directly drive future drill targeting

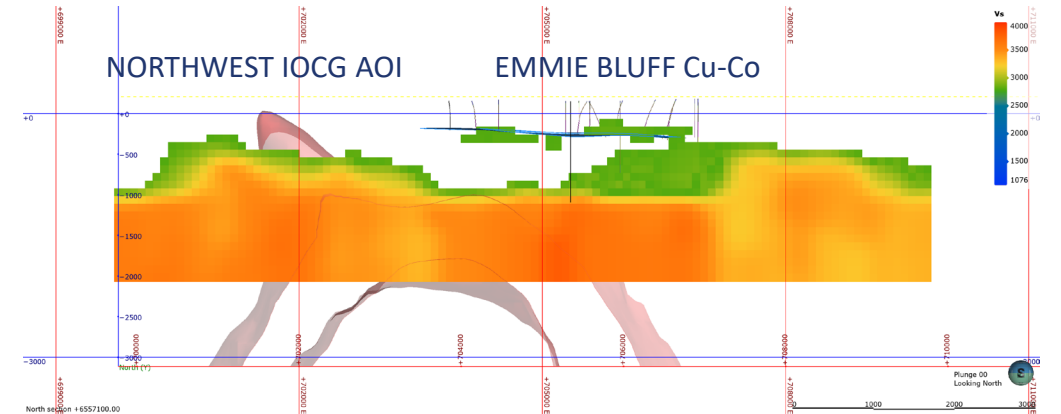


Figure 1 Cross section through most recent interpreted ANT model, with unconstrained inverted gravity shells (nominal density 3.5 g/cm3, 4.0 g/cm3, 4.5 g/cm3) at northing 6,557,100 mN, filtered by shear wave velocity >2,800 m/s.. Emmie Bluff (Blue outline) returns a strong anomaly at the appropriate depth largely consistent with drilling to date. To the West, an apparent palaeotopographic high is associated with gravity anomalism (the AD8 anomaly) and local velocity anomalism. Note the untested basement palaeotopographic step change just west of the centre of the section..

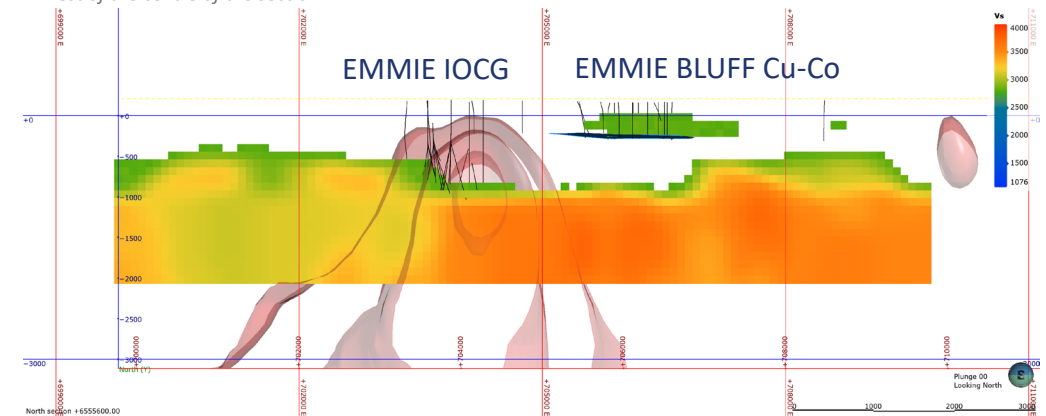


Figure 2 Cross section through most recent interpreted ANT model, with unconstrained inverted gravity shells (nominal density 3.5 g/cm3, 4.0 g/cm3, 4.5 g/cm3) at northing 6,555,600 mN, filtered by shear wave velocity >2,800 m/s. The prominent gravity anomaly associated with a marked step change in palaeotopography is Emmie IOCG. Emmie Bluff (blue outline) again shows coincident velocity anomalism.

# BROADER IOCG POTENTIAL

## Priority Focus - Emmie IOCG

Ongoing drilling to extend and grow the Emmie IOCG mineralised footprint.

## Additional Opportunities - Elaine

Enormous, significantly underexplored gravity anomaly with unexplained low grade copper. Further drilling required

## Additional Opportunities - Other

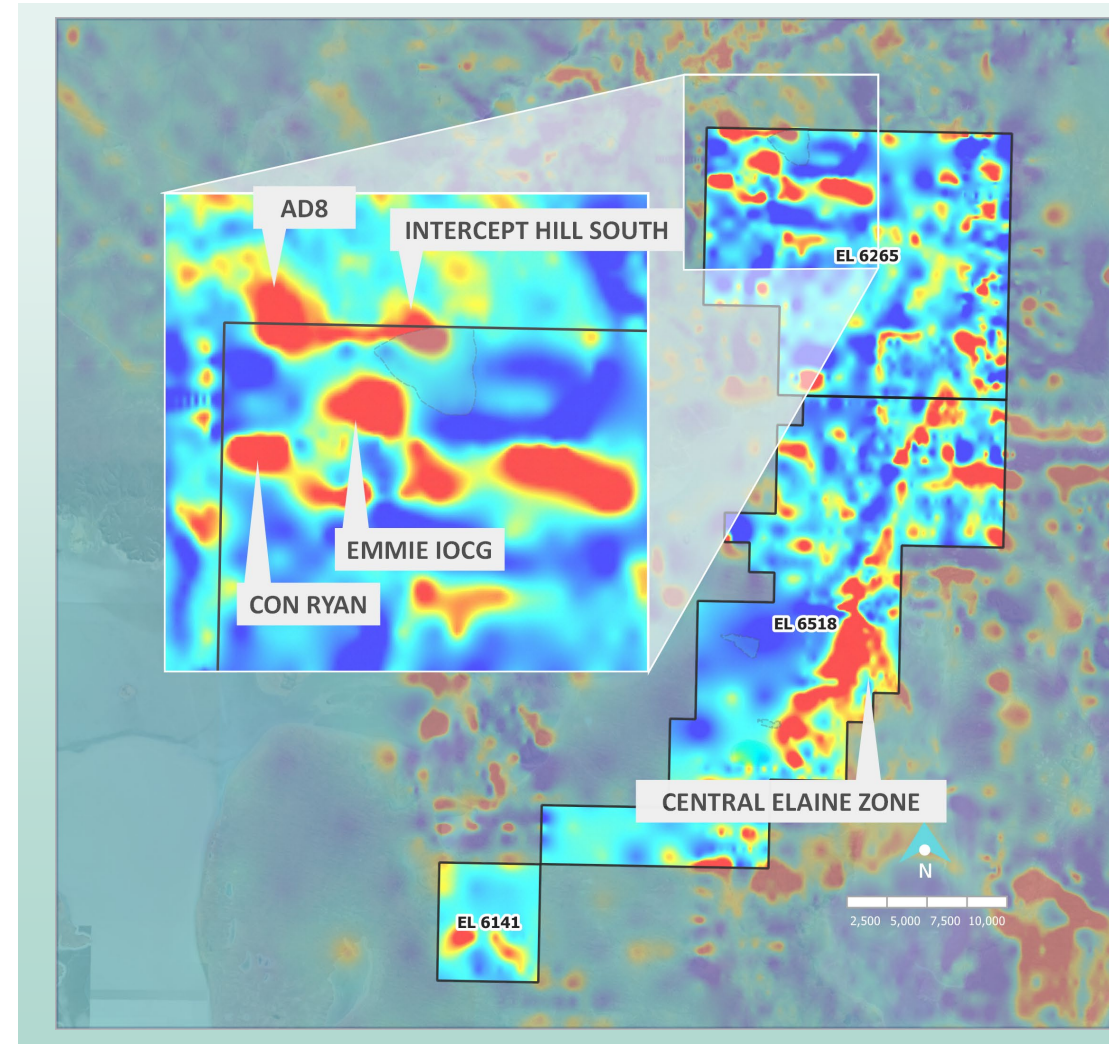
Elizabeth Creek remains **prime IOCG real estate** with numerous untested and undertested anomalies, including:

**Intercept Hill South:** Unexplained IOCG mineralisation immediately north of the tenement boundary, Gravity anomaly extends into Coda ground:

- IHAD 2 (80m of anomalism, peak grades 1.3% Cu, 0.18 g/t Au)<sup>1,2</sup>
- IHAD 5 (100m of anomalism, peak grades 10.5% Cu, 2.15 g/t Au)<sup>1,3</sup>

**AD8:** Geophysically attractive anomaly likely structurally related to Emmie IOCG, extends into Coda ground. No drilling to basement depth.

**Con Ryan:** Underexplored coincident magnetic/gravity anomaly immediately east of Emmie IOCG.



<sup>1</sup> Numbers have been rounded

<sup>2</sup> Drilled by Argo Exploration, 2007. Data extracted from SARIG Envelope 10328, available <https://mer-env.s3.amazonaws.com/ENV10328.pdf>

<sup>3</sup> Drilled by Argo Exploration, 2008. Data extracted from SARIG Envelope 10328, available <https://mer-env.s3.amazonaws.com/ENV10328.pdf>



# OTHER EXPLORATION OPPORTUNITIES

Coda owns exploration tenure in Queensland, Victoria and New South Wales



★ CAMERON RIVER

## Cameron River - (Cu-Au)

- Copper bearing system identified, with anomalous copper confirmed by pXRF

## Balmoral - (REE, HMS, Au)

- 369km<sup>2</sup> exploration tenure in prime Victorian rare-earth and mineral sands province
- HMS prospectivity confirmed by historical drilling, anomalous >1g/t Au grades at surface

BALMORAL

★ CLUB TERRACE

## Club Terrace - (Au)

- 751km<sup>2</sup> exploration tenure across Victorian and southern NSW
- Numerous targets including historical workings for gold and base metals





# WHY INVEST IN CODA



**FUTURE ALIGNED MINERALS  
ENVIRONMENTAL  
COMMITMENT**



**STRONG FOUNDATIONS  
HIGHLY EXPERIENCED  
BOARD**



**1.1MT OF CuEq  
SCOPING STUDY  
IMMINENT**



**PROVEN SUCCESS  
COMMITMENT TO  
EXPLORATION**

## NEWS FLOW

H2 2022

H1 2023

### COPPER-COBALT STUDY

Scoping Study

### GEOPHYSICS

ANT Geophysics IOCG & Tapley Gravity Survey

### CATTLEGRID SOUTH

Cattlegrid Drilling

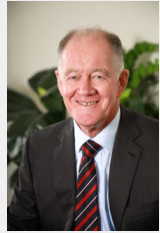
- 1.1Mt CuEq in JORC Resources
- High reward exploration in a proven IOCG system
- Extensive historical drilling, 4 hole drill programme planned



# Appendices



# APPENDIX A: BOARD OF DIRECTORS & SENIOR MANAGEMENT



**Keith Jones**

**NON-EXECUTIVE CHAIR**

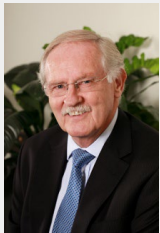
Chartered Accountant and senior mining industry leader with over 40 years of corporate advisory experience including former Chairman of Deloitte Australia and former Chairman of Cannings Purple. Currently Non-Executive Director of Ora Banda Mining.



**Colin Moorhead**

**NON-EXECUTIVE DIRECTOR**

Highly experienced exploration and mine geologist, past president of the AusIMM, former member JORC Committee. Former senior roles including CEO PT Merdeka Copper Gold Tbk, EGM Minerals at Newcrest Mining Ltd, and Geology Manager at Gosowong Gold. Currently NED at Aeris Resources and Ramelius Resources, Executive Chairman of Xanadu, and Sihayo Gold.



**Robin Marshall**

**NON-EXECUTIVE DIRECTOR**

Experienced mining executive previously involved in managing the successful delivery of some of the world's largest resource projects, including Chairman of the Gruyere Steering Committee, major iron ore projects for BHP Billiton Iron Ore and North Ltd.



**Paul Hallam**

**NON-EXECUTIVE DIRECTOR**

Accomplished resource industry leader who has been directly responsible for the delivery and operation of 11 gold, base metals, and iron ore projects over 40 years. Former executive at FMG, Newcrest; former NED of Sandfire Resources and current NED at Greatland Gold.

*More information regarding these directors can be found in Appendix B.*



**Chris Stevens**

**CHIEF EXECUTIVE OFFICER, DIRECTOR**

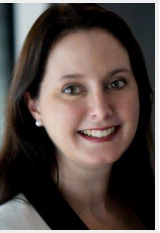
Mineral economist, feasibility and project valuation specialist. Former CEO of Gindalbie Metals, led the acquisition and demerger in 2019. Former Director of Mining Operations Consulting at PwC, senior commercial and consulting roles across mining, oil and gas. BA (Hons) Oxford University, MSc in Mineral Economics (WASM), FAusIMM.



**Kudzai Mtsambiwa**

**CHIEF FINANCIAL OFFICER**

Chartered Accountant with 14 years' experience in the international resources sector. Lengthy career with West African-focused, Perseus Mining – where he held the roles of Group Planning & Business Analyst and Group Financial Controller for seven years. MSc in Mineral Economics (WASM).



**Susan Park**

**COMPANY SECRETARY**

Over 25 years' experience in the corporate finance industry and extensive experience in Company Secretarial and Non-Executive Director roles with ASX, AIM and TSX listed companies. Susan is currently Company Secretary of several ASX listed companies.



**Matt Weber**

**MANAGER - GEOLOGY**

Exploration geologist and mineral economist with over a decade's exploration experience working with Rio Tinto and multiple exploration companies across Western Australia focussing on gold, iron ore and base metals. MSc in Mineral Economics (WASM).





# APPENDIX B: STATEMENTS

## Mineral Resources & Competent Person Statement

### Mineral Resources and Exploration Targets

- MG14 Indicated Mineral Resource:** The information is extracted from the report entitled "Mt Gunson Copper-Cobalt Project Update" created on 19 January 2018 and is available to view on <https://www.asx.com.au/asxpdf/20180119/pdf/43qxphjd18l2x0.pdf>. The company confirms that it is not aware of any new information or data that materially affects the information included in the original market announcement and, in the case of estimates of Mineral Resources or Ore Reserves, that all material assumptions and technical parameters underpinning the estimates in the relevant market announcement continue to apply and have not materially changed. The company confirms that the form and context in which the Competent Person's findings are presented have not been materially modified from the original market announcement.
- Windabout Indicated Mineral Resource:** The information is extracted from the report entitled "Mt Gunson Copper-Cobalt Project Update" created on 19 January 2018 and is available to view on <https://www.asx.com.au/asxpdf/20180119/pdf/43qxphjd18l2x0.pdf>. The company confirms that it is not aware of any new information or data that materially affects the information included in the original market announcement and, in the case of estimates of Mineral Resources or Ore Reserves, that all material assumptions and technical parameters underpinning the estimates in the relevant market announcement continue to apply and have not materially changed. The company confirms that the form and context in which the Competent Person's findings are presented have not been materially modified from the original market announcement.
- Emmie Bluff Mineral Resource:** The information is extracted from the report entitled "Standout 43Mt Maiden Cu-Co Resource at Emmie Bluff" created on 20 December 2021 and is available to view on [https://cdn-api.markitdigital.com/apiman-gateway/ASX/asx-research/1.0/file/2924-02469004-6A1069433?access\\_token=83ff96335c2d45a094df02a206a39ff4](https://cdn-api.markitdigital.com/apiman-gateway/ASX/asx-research/1.0/file/2924-02469004-6A1069433?access_token=83ff96335c2d45a094df02a206a39ff4). The company confirms that it is not aware of any new information or data that materially affects the information included in the original market announcement and, in the case of estimates of Mineral Resources or Ore Reserves, that all material assumptions and technical parameters underpinning the estimates in the relevant market announcement continue to apply and have not materially changed. The company confirms that the form and context in which the Competent Person's findings are presented have not been materially modified from the original market announcement.

### Competent Person Statement for JORC 2012 Mineral Resources

This report was prepared in accordance with the 2012 Edition of the 'Australasian Code for Reporting of Exploration Results, Mineral Resources and Ore Reserves' ("JORC Code") by Tim Callaghan, who is a Member of the Australian Institute of Mining and Metallurgy ("AusIMM"), has a minimum of five years' experience in the estimation and assessment and evaluation of Mineral Resources of this style and is the competent Person as defined in the JORC Code. This announcement accurately summarises and fairly reports his estimations and he has consented to the resource report in the form and context it appears.

The MG14 and Windabout Mineral Resource at the Mount Gunson Copper-Cobalt Project has been estimated by Mr Tim Callaghan, an external consultant, and is reported under the 2012 Edition of the Australasian Code for reporting of Exploration Results, Mineral Resources and Ore Reserves (see Gindalbie Metals ASX announcement 19 January 2018 titled: Mt Gunson Copper-Cobalt Project Update).

### Competent Person Statement for JORC 2012 Mineral Resources – Emmie Bluff

The information in this statement that relates to the Mineral Resource Estimates is based on work done by Dr Michael Cunningham of Sonny Consulting Services Pty Ltd. The information in this report which relates to exploration results is based on information compiled by Mr. Matthew Weber, who is an employee of the company.

Dr Cunningham and Mr Weber are Members of the Australasian Institute of Mining and Metallurgy and have sufficient relevant experience to the style of mineralisation and type of deposit under consideration and to the activities undertaken to qualify as a Competent Person as defined in the 2012 Edition of the Joint Ore Reserves Committee (JORC) Australasian Code for Reporting of Exploration Results, Mineral Resources and Ore Reserves.

The Competent Persons consent to the inclusion in this report of the matters based on the information compiled by them, in the form and context in which it appears.



# APPENDIX C: METAL EQUIVALENT CALCULATIONS

## Statement Regarding Metal Equivalent Calculations

Metal Equivalent grades are quoted for one or more of the Emmie Bluff, Windabout and MG14 Mineral Resources, or for exploration results considered by the company to be related directly to one of these Mineral Resources, in this announcement.

### ***For the Emmie Bluff Mineral Resource:***

The Emmie Bluff Mineral Resource is reported as 43Mt @ 1.3% Cu, 470 ppm Co, 11 g/t Ag and 0.15% Zn (1.84% Copper Equivalent (CuEq)) reported at a cut-off grade of 1% CuEq. The calculation of this metal equivalent is based on the following assumptions.

Metal	Coefficient	Forecast Price	Price Unit
Copper	0.8	\$7,000	USD/Tonne
Cobalt	0.85	\$55,000	USD/Tonne
Zinc	0.9	\$2,100	USD/Tonne
Silver	0.85	\$18.50	USD/Oz

Price assumptions used when calculating copper equivalent grades were based primarily on Consensus Economics forecasts of metals, except for Cobalt, which was sourced via communication with subject matter experts. Metallurgical assumptions used when calculating copper equivalent grades were based on a simple bulk float utilising rougher and minimal cleaner/scavenger circuits. The produced a reasonably consistent mean recovery across most metals of between approximately 83 and 94 percent. For simplicity, and to in part account for losses associated with less intensive cleaner floats and losses to the hydromet plant, these figures were rounded down to the nearest 5%.

Application of these assumptions resulted in the following calculation of CuEq:

$$CuEq\% = Cu\% + 0.00068 \times Co\ ppm + 0.337 \times Zn\ \% + 90.3 \times \frac{Ag\ ppm}{10000}$$

### ***For the Windabout and MG14 Mineral Resource:***

The Windabout and MG14 Mineral Resource are reported at a cut-off grade of 0.5% CuEq as:

- **Windabout:** 17.67Mt @ 0.77% Cu, 492 ppm Co and 8 g/t Ag (1.41% CuEq)
- **MG14:** 1.83Mt @ 1.24% Cu, 334 ppm Co and 14 g/t Ag (1.84% CuEq)



# APPENDIX C: METAL EQUIVALENT CALCULATIONS

## Statement Regarding Metal Equivalent Calculations (continued)

The calculation of this metal equivalent is based on the following assumptions:

Metal	Mining Recovery %	Dilution %	Recovery %	Payability %	Forecast Price	Price Unit
Copper	0.9	0.05	0.6	0.7	\$6,600	USD/Tonne
Cobalt	0.9	0.05	0.85	0.75	\$55,000	USD/Tonne

Price assumptions used when calculating copper equivalent grades were based on recent historical metal prices at the time of calculation (2018). Metallurgical assumptions are based on extensive metallurgical testwork undertaken on the two deposits to 2018 across various potential flowsheets involving both floatation and leaching. Ag analyses in the estimation and metallurgical testwork were considered insufficient at the time to include in the metal equivalent calculation.

Application of these assumptions resulted in the following calculation of CuEq:

$$CuEq\% = Cu\% + 0.0012 \times Co\ ppm$$

It is the opinion of the company that both sets of prices used in the calculations are reasonable to conservative long-term forecasts for real dollar metal prices during the years most relevant to the deposits (approx. 2026-2030).

It is the opinion of the company that all of the elements included in the metal equivalent calculations have a reasonable potential to be recovered and sold.

For full details of the Emmie Bluff Metal Equivalent calculation, please see “Standout 43Mt Maiden Cu-Co Resource at Emmie Bluff”, released to the ASX on 20<sup>th</sup> December 2021 and available at [https://www.codaminerals.com/wp-content/uploads/2021/12/20211220\\_Coda\\_ASX-ANN\\_Standout-43Mt-Maiden-Cu-Co-Resource-at-Emmie-Bluff\\_RELEASE.pdf](https://www.codaminerals.com/wp-content/uploads/2021/12/20211220_Coda_ASX-ANN_Standout-43Mt-Maiden-Cu-Co-Resource-at-Emmie-Bluff_RELEASE.pdf). For full details of the MG14/Windabout Metal Equivalent Calculation, please see “Confirmation of Exploration Target & Mineral Resource and Ore Reserve Statement”, released to the ASX on 23<sup>rd</sup> October 2020 and available at [https://www.codaminerals.com/wp-content/uploads/2020/10/20201026\\_Coda\\_ASX-ANN\\_Confirmation-Statements-JORC.pdf](https://www.codaminerals.com/wp-content/uploads/2020/10/20201026_Coda_ASX-ANN_Confirmation-Statements-JORC.pdf).





**CODA**  
MINERALS

6 Altona Street  
West Perth  
WA 6005

08 6270 6331  
[info@codaminerals.com](mailto:info@codaminerals.com)

